

Sikafloor reactive resin systems

Sika Services AG

Construction



Sika Services AG

Sikafloor reactive resin systems

Content:

- Mixing tools and application equipment
- Sikafloor epoxy resin systems
- Sikafloor polyurethane systems



Sikafloor reactive resin systems

Brands

Sikafloor®	Resin (PU, EP) and cementitious flooring systems (Pump screeds, Dry shake)
Sikafloor®-Pronto	PMMA flooring systems
Sikafloor®-EpoCem®	Epoxy modified cementitious system
Sikafloor®-PurCem®	Polyurethane modified cementitious system
Sikalastic®	Polyurethane spray-applied, balcony and roofing systems
Sikagard®	Protective coatings

Construction



Sika Services AG

Sikafloor reactive resin systems

Product description



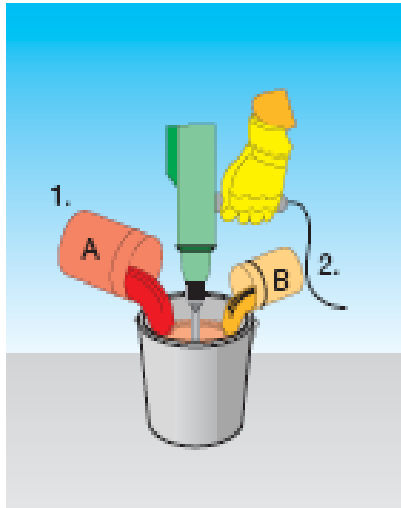
- Epoxy based systems - **SR-200**
- Polyurethane system - **SR-300 / SR-400**



Sika Services AG

Sikafloor reactive resin systems

Mixing tools and application equipment



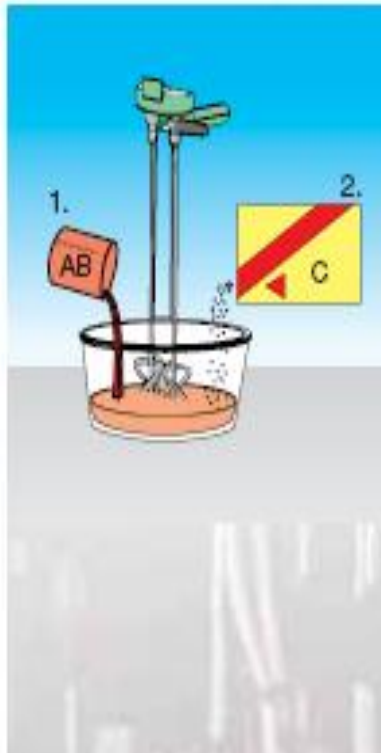
Drill and Mixing Paddle

This tool is only recommended for unfilled binders. Premix Comp. A first. Then add Comp. B and mix for a minimum of 3 minutes until the mix is fully homogeneous.



Sikafloor reactive resin systems

Mixing tools and application equipment



Double Mixing Paddle (free hand or on a stand)

This is the ideal tool for all filled binder systems as well as for mortar mixes. First of all, mix Component A + B together, put the premixed A + B Component or liquid binder in the mixing pail, and then add Powder Comp. C while stirring. Mix for a minimum of 3 minutes until the mix is fully homogeneous.



Sikafloor reactive resin systems

Mixing tools and application equipment



Primer application with medium long pile roller



Application of a self smoothing screed with a notched trowel



Application e.g. of Sikafloor®-261 Thixo with a textured roller



Sealing of a broadcast layer with a straight trowel or "squeegee" blade

Sikafloor reactive resin systems

Mixing tools and application equipment



Sikafloor reactive resin systems

Mixing tools and application equipment



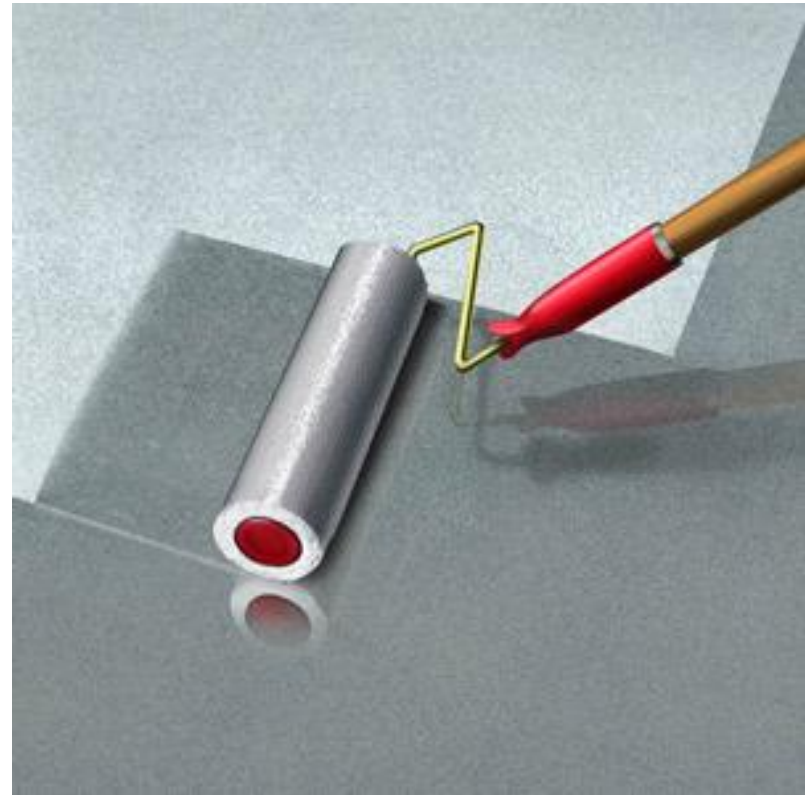
Sealing of a self smoothing floor with a mat sealer, using a short pile roller



Spiked rolling immediately removes any entrapped air

Sikafloor reactive resin systems

- **Sikafloor[®]-2530 W** is a two part, water dispersed, solvent free, coloured, epoxy resin based coating.



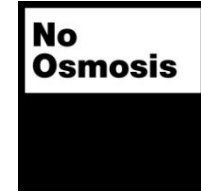
Sikafloor reactive resin systems

- Sikafloor-2530 W – uses
 - Coloured epoxy coating for concrete, cement screeds, broadcast systems and epoxy mortars
 - Can be subjected to normal up to medium heavy mechanical and chemical loading
 - For production areas, warehouses, car park decks, garages, etc.



Sikafloor reactive resin systems

- Sikafloor-2530 W – characteristics



- Good mechanical and chemical resistance
- Water vapour permeable
- Solvent free and odourless
- Easy application



The Sika logo, featuring the word "Sika" in a stylized, bold, yellow font with a registered trademark symbol (®) to its right, set against a red triangular background.

Sika Services AG

Sikafloor reactive resin systems

- Sikafloor-2530 W – system build up



Coating system:

Primer: 1 x Sikafloor®-156 + 10 wt.-% Thinner C
(non absorbent surfaces)

1 x Sikafloor®-2530 W + 5 wt.-% water
(normal absorbent surfaces)

1 x Sikafloor®-156
(strongly absorbent surfaces)

Sikafloor reactive resin systems

- Sikafloor-2530 W – system build up

Coating system:

Seal coat smooth: 1 - 2 x Sikafloor[®]-2530 W

Seal coat textured: 1 - 2 x Sikafloor[®]-2530 W
+ 2 wt.-% Extender T

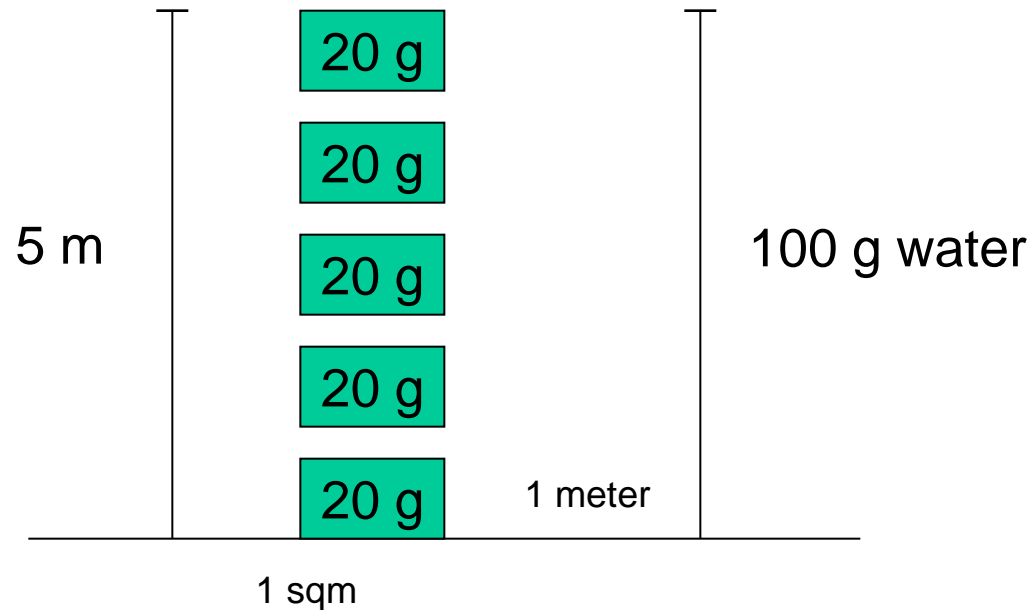
Seal coat for broadcast systems:

2 x Sikafloor[®]-2530 W



Sikafloor reactive resin systems

At room temperature: condense water ca. 20 g/m³ air



Height > 5 Meter - > slow curing

Height < 5 Meter - > condensation, no curing

Sikafloor reactive resin systems

- Sikafloor[®]-2530 W for storage facilities



Sikafloor reactive resin systems

- **Sikafloor[®]-264** is a two part, multi purpose binder based on epoxy resin. Due to it's low viscosity, highly filled self-smoothing and broadcast systems as well as textured coatings, mortar screeds and seal coats can be produced.



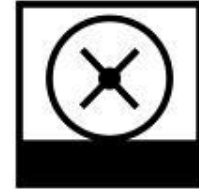
Sikafloor reactive resin systems

- Sikafloor-264 – uses
 - Screeds, coatings and layers for concrete and cement screeds with normal up to medium heavy wear e.g. storage and assembly halls, maintenance workshops, garages and loading ramps etc.
 - The broadcast system is recommended for multi-storey and underground car parks, maintenance hangars and for wet process areas, e.g. beverage and food industry



Sikafloor reactive resin systems

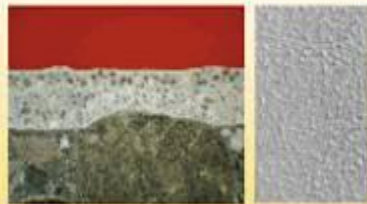
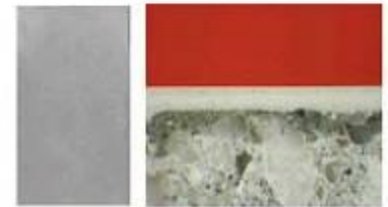
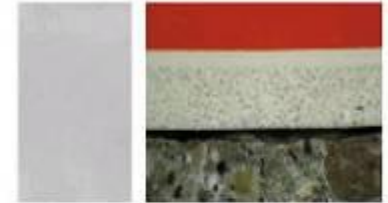
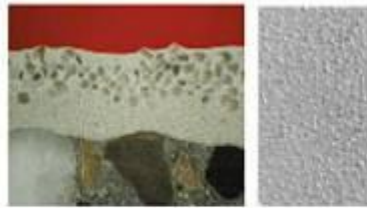
- Sikafloor-264 – characteristics



- Highly fillable
- Good chemical and mechanical resistance
- Easy application
- Economical
- Liquid proof
- Solvent-free
- Gloss finish
- Slip resistant surface possible

Sikafloor reactive resin systems

- Sikafloor-264 – system build up



Sikafloor reactive resin systems

- Sikafloor-261 – system build up

Roller coating:

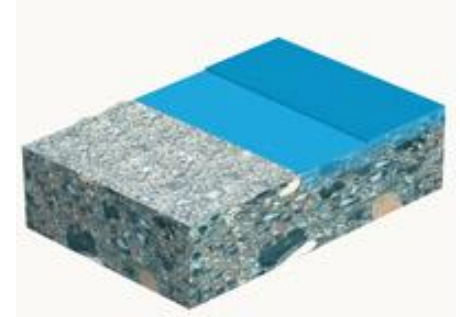
Primer:	1 x Sikafloor®-161
Coating:	2 x Sikafloor®-264

Textured coating:

Primer:	1 x Sikafloor®-161
1st layer:	1 x Sikafloor®-264
2nd layer:	1 x Sikafloor®-264 + Extender T

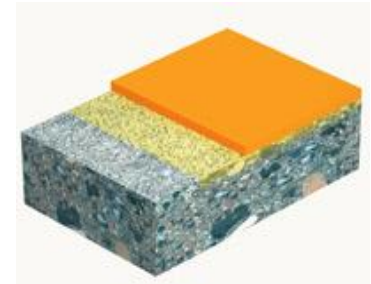
Note:

In cases of limited exposure and normal absorbent concrete substrates priming with Sikafloor®-161 is not necessary.



Sikafloor reactive resin systems

- Sikafloor-264 – system build up



Self-smoothing system 1.0 mm:

Primer: 1 x Sikafloor®-161

Wearing course: 1 x Sikafloor®-264 + Sikafloor® Filler 1

Self-smoothing system 1.5 - 3.0 mm:

Primer: 1 x Sikafloor®-161

Wearing course: 1 x Sikafloor®-264 + quartz sand
(F36 (0.08 - 0.25 mm))

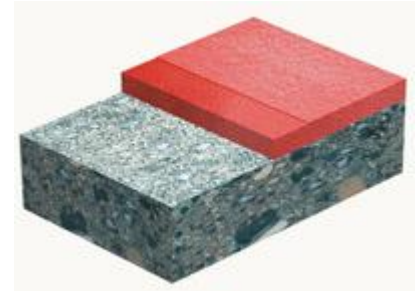
Self-smoothing system 1.5 - 3.0 mm for highest aesthetic demands:

Primer: 1 x Sikafloor®-161

Wearing course: 1 x Sikafloor®-264 + quartz sand (F 36
(0.08 - 0.25 mm)) + Sikafloor® Filler 1

Sikafloor reactive resin systems

- Sikafloor-261 – system build up



Broadcast system approx. 4 mm:

- Primer: 1 x Sikafloor®-161
- Base coat: 1 x Sikafloor®-264 + quartz sand (F36 (0.08 - 0.25 mm))
- Broadcasting: quartz sand (0.4 - 0.7 mm) to excess
- Seal coat: 1 x Sikafloor®-264

Mortar screed approx. 8 mm layer thickness:

- Primer: 1 x Sikafloor®-161
- Bonding bridge: 1 x Sikafloor®-161 + Extender T
+ fine quartz flour
- Screed: 1 x Sikafloor®-264 + suitable sand mixture

Sikafloor reactive resin systems

- Sikafloor[®]-264 for high tech workshops and garages



Construction

Sika[®]

Sika Services AG

Sikafloor reactive resin systems

Sikafloor-Economy Line

- **Sikafloor[®]-161** is a two part, solvent-free, epoxy primer and binder.
- **Sikafloor[®]-263 SL** is a two part, solvent-free, self-smoothing epoxy resin.
- **Sikafloor[®]-264** is a two part, solvent-free, epoxy roller and seal coat.



Sikafloor reactive resin systems

Sikafloor-Economy Line

- Sikafloor-161
- Sikafloor-263 SL
- Sikafloor-264



Value Selling - Sikafloor-Economy Line

Commercially competitive solutions due to:

- Easy handling 25kg units but also supplied in large 200kg drums
- Application Engineering
- Extended colour range
- Increased flexibility



Sikafloor reactive resin systems

Application Engineering for the Streetfighter Concept



Construction

Sika®

Sika Services AG

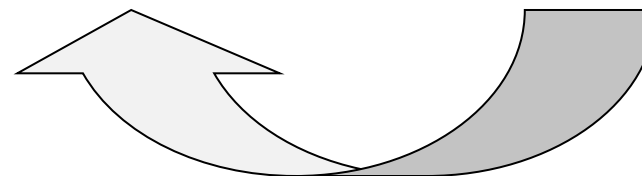
Ghelamco Wroclaw+Warsaw



- Two underground car parks
- Area: 15.000m² Wroclaw + 35.000m² Warsaw
- Main competitor: Eurostep (local producer)

Ghelamco Wroclaw+Warsaw

Product	Cons.	Price €	C2%	Product	C2%
SR-161	0,4	3,80	42,6	SR-156	10,1
SR-263 SL	0,5	3,78	39,7	SR-261	27,0
SR-264	0,6	3,80	38,9	SR-261	27,0
Total:			39,90		22,47



Difference + 17 % !!

Sika Services AG

Construction

Sika®

INDESIT Wrocław

Construction



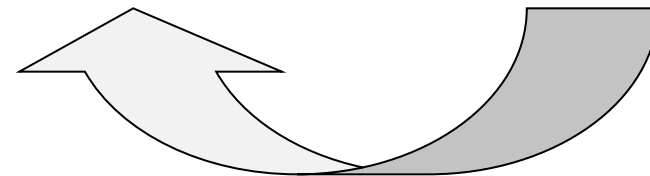
- „White goods” new factory
- Area : 40.000 m²
- Main competitor: ERADUR

Sika®

Sika Services AG

INDESIT Wrocław

Product	Cons.	Price €	C2%	Product	C2%
SR-161	0,4	4,0	44,3	SR-156	14,5
SR-263 SL	1,6	4,0	41,8	SR-261	30,7
Total:			42,3		27,5



Difference + 15 % !!

Sika Services AG

Construction

Sika®

Sikafloor reactive resin systems

What does that mean for me in my region?

- Easy to apply, no additional knowledge or training needed
- For each application optimised products depending on regional or customer demands
- Flexibility in system build up to serve all industries and requirements
- Especially developed mixing (i.e. mixing gauge) and application tools (i.e. drum handling and site trolley) to support your customers on site
- Drawings and detailing to support your architects and engineers for specifications

Sikafloor reactive resin systems

- **Sikafloor[®]-300 N** is a two part, solvent free, low VOC emission certified, elastic, self-smoothing, two part PUR resin.



Sikafloor reactive resin systems



- Sikafloor-300 N – uses
 - Elastic smooth wearing course for concrete and other cement based substrates
 - For decorative floor finishes
 - Particularly suitable for hospitals, schools, sales premises, showrooms, entrance halls, lobbies, open-plan offices, museums
 - For interior use only

Sikafloor reactive resin systems

- Sikafloor-300 N – characteristics

- Very low VOC emission
- Solvent free
- Permanently elastic (crack bridging)
- Good mechanical resistance
- Very high yellowing resistance
- Reduces footfall sound
- Decorative designs possible using coloured chippings etc.
- Easy to apply
- Low maintenance finish



Sikafloor reactive resin systems

- Sikafloor-300 N – system build up

Self-smoothing coating ~ 2.0 mm:

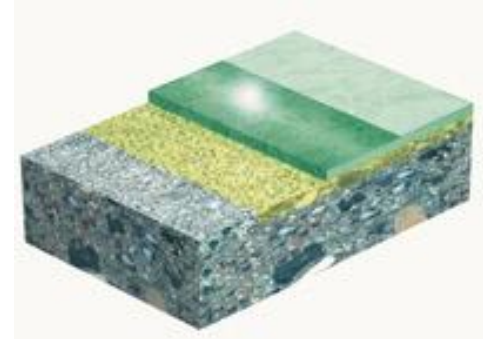
Primer: 1 x Sikafloor®-161

Wearing course: 1 x Sikafloor®-300 N
+ quartz sand 0.08 - 0.25 mm

(e.g. Sikadur®-504)*

+ Sikafloor® Colourchips < 3 mm
(optional)

Seal coat: 1 x Sikafloor®-302 W (mandatory)



*The addition of quartz sand is limited, the upper limits are dependent on the temperature (see application details)

Sikafloor reactive resin systems

- Sikafloor[®]-300 N for galleries and museums



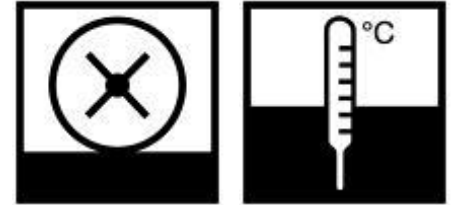
Sikafloor reactive resin systems

- **Sikafloor[®]-326** is a two part solvent free coloured self-smoothing PUR resin with tough-elastic properties.



Sikafloor reactive resin systems

- Sikafloor-326 – uses



- Smooth wearing course with crack-bridging properties for industrial floors in production and storage facilities, work shops etc.
- Broadcast wearing course with crack-bridging properties for wet working areas (food and beverage industry etc.), car park decks and loading ramps etc.
- Seal coat for broadcast systems
- Can be subjected to normal to medium heavy mechanical and chemical stress

Sikafloor reactive resin systems

- Sikafloor-326 – characteristics
 - Flexible and tough-elastic
 - Crack-bridging
 - Good chemical and mechanical resistance
 - Slip resistant surface possible
 - Liquid proof
 - Easy to apply
 - Easy to clean
 - Economical
 - Solvent-free



Sika Services AG

Sikafloor reactive resin systems

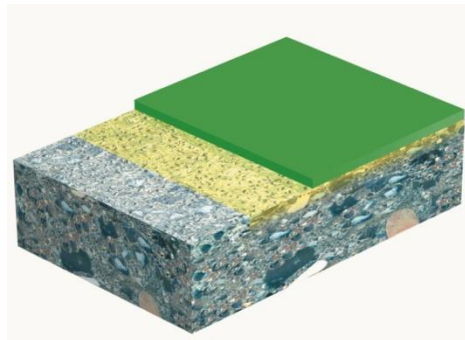
- Sikafloor-326 – system build up

Self-smoothing system 1.5 - 2.0 mm:

Primer: 1 x Sikafloor®-161

Coating: 1 x Sikafloor®-326 + quartz sand
(F 36 : 0.08 - 0.25 mm)

Application steps and the use of different batch numbers during one project might lead to a slight colour variation. For areas with aesthetical requirements, the use of Sikafloor®-357 N as seal coat is recommended.



Sikafloor reactive resin systems

- Sikafloor-325 – system build up

Broadcast system approx. 3 mm (single layer system):

Primer: 1 x Sikafloor®-161

Base coat: 1 x Sikafloor®-326 + quartz sand
(F 36 : 0.08 - 0.25 mm)

Broadcasting: quartz sand (0.4 - 0.7 mm) to excess

Seal coat: 1 x Sikafloor®-325



Sikafloor reactive resin systems

- Sikafloor-325 – system build up

Broadcast system approx. 4 mm (2 layers system with improved crack bridging properties):

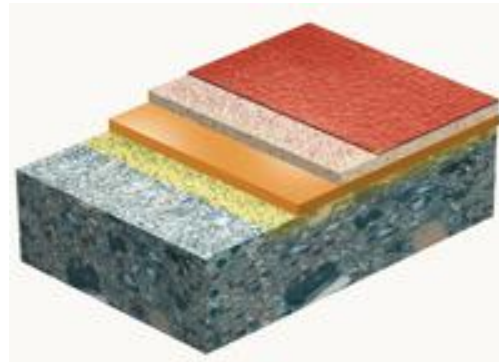
Primer: 1 x Sikafloor®-156

Membrane: 1 x Sikafloor®-326 + quartz sand
(F 36 : 0.08 - 0.25 mm)

Base coat: 1 x Sikafloor®-326

Broadcasting: quartz sand (0.4 - 0.7 mm) to excess

Seal coat: 1 x Sikafloor®-326



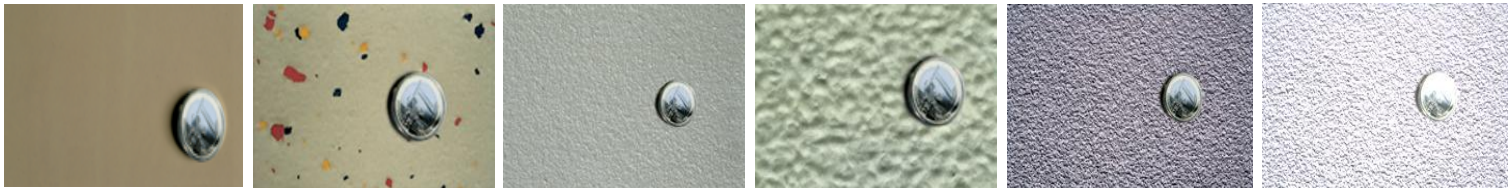
Sikafloor reactive resin systems

- Sikafloor[®]-326 for cold storage facilities

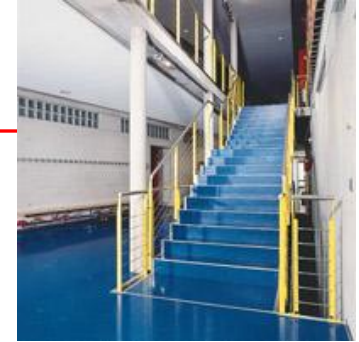


Sikafloor reactive resin systems

- **Sikafloor[®]-400 N Elastic** is a one part, highly elastic, solvent containing, UV resistant, coloured, moisture curing polyurethane resin coating.



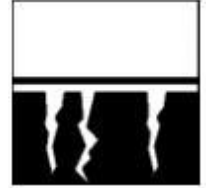
Sikafloor reactive resin systems



- Sikafloor-400 N – uses
 - Smooth or slip resistant, UV resistant, waterproof, crack-bridging coating for concrete and cementitious screed substrates
 - For light to medium mechanical exposure
 - For balconies, terraces, footbridges, stairways etc.
 - As the top coat in the Sika Ground Water Protection System (I N) for Bund Containment Areas

Sikafloor reactive resin systems

- Sikafloor-400 N – characteristics
 - Highly elastic
 - Crack-bridging
 - Waterproof
 - UV resistant, non-yellowing
 - Weather resistant
 - Abrasion resistant with normal use
 - Slip resistant surfaces are possible



Sikafloor reactive resin systems

- Sikafloor-400 N – system build up

System for light wear (layer thickness: 0.3 - 0.5 mm):

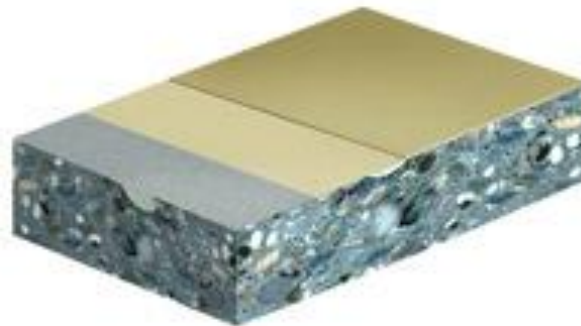
Primer: 1 x Sikafloor®-400 N Elastic diluted with
10 wt.-% Sika Thinner C

Seal Coat: 1 x Sikafloor®-400 N Elastic

System for medium wear (layer thickness: 0.7 - 1.2 mm):

Primer: 1 x Sikafloor®-161

Coating: 1 x Sikafloor®-400 N Elastic)



Sikafloor reactive resin systems

- Sikafloor[®]-400 N for walkways and balconies

